

4600 West Dickman Road  
Battle Creek, MI 49037 USA  
+1 (269) 589-5558

## Battle Creek, MI Service Center

### CAPABILITIES

Engineered Solutions

Repair / Overhaul

Upgrades & Re-rates

Spare Parts

Reverse Engineering

Full-Service Machine Shop

Welding

Hydrostatic Testing

Dynamic Balancing

Field Service

Commissioning

Pump Training

Service Agreements

Energy Audits

Painting

3rd Party Pumps

Mechanical Seals

Coatings

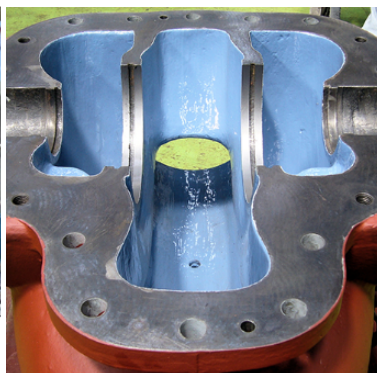


**Torishima Service Solutions (TSS) Michigan Service Center** is fully equipped to support the service, repair, and overhaul requirements of our customers. We provide an industry-leading OEM presence within easy reach of your facility, with guaranteed quick response and turnaround of equipment regardless of pump make or model. TSS experience spans across several complex industries including oil and gas, conventional power generation, desalination, and municipal water.

TSS offers a comprehensive range of on-site services such as installation, inspection, commissioning, removal, preventative and scheduled maintenance, emergency breakdown service, and full turnkey projects all designed to deliver optimum pump life-cycle results with minimum downtime. Our engineers and service technicians are highly trained and experienced, working to minimize unscheduled shutdowns for customers, while considering all factors associated with the pump duty conditions, age, and demands on the pump system.



Upgrade hydraulic parts!



## FEATURES

Engineering solutions and upgrade capabilities including pump re-rates, specialized corrosion- & erosion-resistant coatings

**World-class service solutions to maximize the life span and efficiency of plants.**

Installation  
& Field test

Maintenance

Operation



## CORE COMPETENCIES

Torishima offers engineering solutions that improves equipment reliability and performance. Our Battle Creek facility is designed to handle rotating equipment up to 20 tons. With continuous changing process requirements, we update existing pumps to the latest standards and perform equipment assessments, retrofits, upgrades, and re-rates. We repair and service rotating equipment, regardless of the original equipment manufacturer (OEM), and can offer extended warranties instead of the included OEM warranty.

24-hour service:	Yes
Facility Size:	50,000 sq ft
Products/service:	Service & repair Torishima and other manufacturer's pumps brands (KSB, Flowserve, Sulzer, Union Pump, Worthington, Bingham, Byron Jackson, and others). Pump types centrifugal, reciprocating and steam.
List of equipment:	<ul style="list-style-type: none"><li>- Vertical boring mills</li><li>- Lathes</li><li>- Wash booth</li><li>- Welder (wire &amp; tig)</li><li>- Balance machine</li></ul>
Value Add for the customer:	<ul style="list-style-type: none"><li>- 24-hour emergency repair</li><li>- Offering engineered solutions above and beyond the standard repair</li><li>- Root-cause analysis - pump failures</li><li>- Offer corrosion &amp; erosion-resistant coating</li><li>- Reverse engineering capability</li></ul>
General Manager:	Mark Vogel
Manager contact information:	(269) 589-5558 mark.vogel@torishimapump.com

